

Member News

The latest from members of the Springfield Chamber

—Click here



A Special Section of

THE BOTTOM LINE

—Click here

The Member Update

January
2011

The Springfield Area Chamber of Commerce

2012 Business After Hours Annual Pass for \$70!

(that's 2 months of Free Business After Hours)

Network with the area's friendliest business people all year long!

Benefits:

- Automatically pre-registered for every Business After Hours
- Personalized name tag for every Business After Hours
- Credit card sized pass with date and location of every Business After Hours

To purchase contact Vicki 541.746.1651

**2012 BAH Pass sale will end February 29... get yours now!*



Find us on
Facebook

Facebook.com/SpringfieldChamberofCommerce

Submit New member profiles and news (150 words or less) to: mikayle@springfield-chamber.org

www.springfield-chamber.org • info@springfield-chamber.org



JAN 11	Curtis Restaurant Equip.
FEB 8	SELCO Community C.U.
MAR 14	Ewing Irrigation Products
APR 11	TBD
MAY 9	BELFOR
JUN 13	Chamberfest
JUL 11	Guaranty Chevrolet & RV
AUG 8	Eugene Airport
SEP 12	Kendall Auto Group
OCT 10	Willamalane
NOV 14	Red Lion
DEC 12	Springfield Depot

December New Members

*November 21 to
December 20, 2011*

Second Thoughts Resale, LLC
OEE Security
Affordable Insurance Concepts
The Nines Salon
Parr Lumber
The Oregon Community Foundation
Bella Dea
Laurel Hill Center
Summit Networking & Referral Group
Counter Intelligence
Emeritus @ Springfield, Assisted Living Campus

Chamber Member Renewals

November 21 to December 20, 2011

A Coach For All Reasons
A-1 Auto Supply
A-1 Commercial Construction Inc.
AAMCO Transmissions
Advanced Hearing Plus, Inc.
Arbonne Health, Wellness,
Skin Care
Branch Engineering, Inc.
Business Software Solutions
Cappelli Miles
Caught-in-the-Act Productions
Cobalt Computer Services Inc
Curtis Restaurant Equipment, Inc.
Cutco Cutlery
EDMS, Inc.
Environment Control - Eugene, Inc.
Friend of the Chamber, Jeff Nelson
Friend of the Chamber, John Lively
Gun Pro Shooting Supplies, LLC
Horace Mann Insurance Companies
Lane Community College

Lane Events Center
Lane Forest Products
Leslie P. Smoluch MD PC
LifeGive Chiropractic
M&M Quality Construction
Marshall's Inc.
McKay Commercial Properties, LLC
McKenzie-Willamette
Medical Center
Mercedes Benz of Eugene
Metro Planning, Inc.
Norahs Productions, LLC
Oldfields
Oldham Crane Service, Inc.
Ordell Construction LLC
Pearson's Health & Nutrition
The Printer's Studio
Rental Owners Association
Lane County
Robertson Sherwood
Architects, PC

The Roving Controller
Sacred Heart Medical Center
at RiverBend
ShelterCare
Springfield Memorial Gardens
& Funeral Home
Springfield Times
Sterling Graphics
Summit Benefit & Actuarial
Services, Inc.
Three Rivers Casino & Hotel
University of Oregon Alumni
Association
Voith Paper Fabric &
Roll Systems, Inc.
Waddell & Reed, Inc.
Weddings On Call
Wells Fargo Home Mortgage
Wilderness Machine Works/
River Outfitters

For more information about member benefits contact Jason Barnhart, Membership Director at jason@springfield-chamber.org

Renew your membership and get a FREE microfiber cleaning cloth to provide you clear vision for the new year!



New Member Profiles

Second Thoughts Resale



*Christine Thomas & Erica Ware,
Co-Owners
149 5th Street
Springfield, OR 97477
541.747.8148*

Christine Thomas and Erica Ware have lived in Springfield for almost 9 years. They opened their second hand store, Second Thoughts Resale, LLC, as part of a career change for Erica and to help people in this tough economy by providing a place to purchase quality merchandise at affordable prices, that might otherwise have ended up in the landfill.

Their store offers a variety of merchandise from housewares to books and from tools to toys. They also carry apparel, from infant to 4X, seasonal clothing and formal dresses.

Both Christine and Erica enjoy finding great bargains to pass along to others, but Christine will keep her day job working for the Springfield School District. They also have three children in the Springfield School District, one in high school, one in middle school and one in elementary school.

EMF Power Pro

*Jim and Jill LaRue, owners
317 Suite F Goodpasture Island Rd
Eugene, OR 97401
www.emfpowerpro.com
866.713.6933*

EMF Power Pro LLC markets a product, the Mega Power Saver, that does the following:

- Reduces electrical magnetic radiation
- Saves money on your electricity bill
- Reduces the impact of electrical surges
- Increases efficiency by stabilizing the voltage
- Improves power factor of appliances
- Safe to use 24 hours a day with built in fuse protection
- Simple plug-in design (unlike competitors that require an electrician to install)

Electrical magnetic radiation is emitted by all electrical devices as well as devices that emit radio waves, such as kitchen appliances, computers, cell phones, TV's and electrical wires.



The EMF Power Pro/EMI Filter is a highly innovative and revolutionary product that may be an essential tool for environmental health to maintain safe levels of EMF (electrical magnetic fields) within homes and small businesses.

"One Solution to Indoor Pollution"

Counter Intelligence

*Doug Mansfield
Forefront Designs Inc.
303 South 5th Street
Suite 300
Springfield OR 97477
P- 541.747.4884
F-541.747.4840
C-541.953.9526*



For 25 years we've been the area's leading provider of preformed laminate countertops and a major builder of commercial cabinets and casework. You might not be familiar with us as we have been quietly building schools, hospitals, banks and providing residential countertops to home centers. We are excited to announce that we are expanding our range of countertop products and services.

We have moved to the Booth Kelly Center near Downtown Springfield and will now be offering a full line of countertops for your home and office. From Granite to Engineered Stone to Solid Surface to High Pressure Laminate to Stainless Steel, Butcher Block and beyond. We have the experience and expertise to guide you through the many options now available.

Love the look of stone but concerned about the cost? Wondering about the new possibilities in undermount sinks, even in laminate? Looking for good low cost green alternatives? *We have the answers, we are "Everything Countertop".*

Member Events

First Friday Communities of Color Network

Friday, January 6, 2012

5:30-7pm

Springfield City Hall Lobby area
next to the Springfield Library
225 Fifth Street in Springfield

*Springfield Public Schools
and the City of Springfield are
hosting this
free event*

Please join us for some
good food, great company
and entertainment! The
Communities of Color Network
(CCN) offers an opportunity
to network with other
communities of color and their
allies to develop relationships
in an informal atmosphere.

Saturday Stories and Songs at Springfield Public Library

Saturday, January 7 • 1pm

Springfield Public Library,
children's story corner

Children of all ages invited for
music, stories and a craft at
this free program

Celebrate Penguins in story
and song! Bring the whole
family to storytime with
Patiebuff Bear as she leads
children and their families
in lively, interactive stories,
songs, and craft.

Contact *Patiebuff Bear* at
541-726-2243.

Preschool Crafts at the Springfield Public Library

*Preschoolers Fun with Art &
Science*

Monday, January 9 • 10:30-11am

Library Meeting Room,
Springfield Public Library

Preschoolers are invited to have fun
exploring creative arts and science
at the Springfield Public Library,
Monday, January 9, at 10:30am.
Children should come dressed
for messy craft projects and be
accompanied by a caregiver. The
program is free. All supplies will
be provided by the library. It is for
children ages 3-6.

*wheremindsgrow.org/
programskids.html*

Barbara Thompson, 541-726-3766

Mayor Christine Lundberg's 2012 State of the City Address

Wed., January 11, 2012 5:30pm

Richard E. Wildish Theater
630 Main St. Springfield

This event is free and open to the
public. This is Mayor Lundberg's
second State of the City Address.
She and others will be available for
interviews immediately following
the State of the City event.

Royal Tea Party

Sat., January 21 • 12-2pm • \$3

Willamalane Center
250 S. 32nd St in Springfield

Miss Lane County will be on hand
to sign autographs and pose for
pictures with aspiring princes and
princesses. Everyone is crowned,
gets to decorate a sugar cookie,
make a royalty craft project, and
watch the film "Enchanted."

541-736-4544 • *willamalane.org*

Springfield's 14th Annual Martin Luther King, Jr. March & Celebration

Monday, January 16, 2012

FREE

March begins at 1:30pm at
the Springfield Justice Center.

Celebration at Springfield High
School 2-4pm.

Celebrate recognizing Dr. King
through K-12 student entries of
essays, poetry and art.

Opening remarks by Mayor
Christine Lundberg and Police
Chief Jerry Smith; speeches by the
contest winners; music by Rockin'
Amigos, Springfield High Choir,
Mariachi del Sol, Hamlin Middle
School Choir and Eric Richardson's
Invisible Arts Project.

Alzheimer's Association Oregon Chapter Announces Winter Class Schedule

These informational programs are
free. People interested in attending
may call the Association 24/7 at
1-800-272-3900 to register.
www.alz.org/oregon

Basics of Alzheimer's Disease

January 25, 2012 • 6-7pm

Legal and Financial Issues in Alzheimer's Disease

February 22, 2012 • 6-7pm

Successful Communication for the Alzheimer's Caregiver

March 28, 2012 • 6-7pm

All classes at the Willamalane Adult
Activity Center, 215 West C Street,
Springfield

Events

Willamalane teams with Cabela's to offer free classes at Willamalane Center

For students grades 6-12

Fly Tying • Friday, January 6
5:30-7:30 pm

Join Cabela's fly-fishing expert to learn the basics of fly tying. Parents can also attend. Local angler Bill Krpalek will demonstrate the basics of tying flies and will teach students how to tie basic trout and steelhead patterns. Tying materials will be provided.

Space is limited, advance registration is required. The free class will be offered again on March 2.

Archery • Wed., January 25 &
Feb 22 • 6:30-7:30pm

Learn the fundamentals required to be successful at hitting bull's-eyes and how to tune bows for optimal arrow flight and accuracy. In the second class, the focus will be on shooting including the process of aiming, bow grip, follow through and more. Attendees must attend an instruction class prior to attending a shooting night.

Space is limited and advance registration is required. The series of classes will be offered again in spring.

Big Game Hunter 2012 Video Game Tournament

Saturday, January 14, • 6-10pm

The top three winners will receive prizes including a Big Game Hunter 2012 Top Shot Elite package. Class at Two50, Willamalane's new youth center.

In the spring, Willamalane will team with Cabela's to offer additional free classes including a Dutch Oven cooking class and an indoor archery tournament.

Register for Cabela's free classes and for more info:
541-736-4544 • willamalane.org

Member News

Oregon Community Credit Union Grant Boosts After-school Activities for Springfield Middle-schoolers

A \$1,500 grant from Oregon Community Credit Union will boost programs and access at Two50, Willamalane's youth center.

The grant will also help make it possible for middle school students throughout Springfield to get to Two50, located inside Willamalane Center at 250 S. 32nd St. A van will pick up students one day a week at each middle school in Springfield.

"The partnership with Oregon Community Credit Union means the program will reach more kids," says Jennifer O'Brien, Two50 supervisor.



The credit union will also provide two free classes for students and their parents. The first class focuses on financial aid and other methods of paying for college. The second class teaches personal finance skills for use after graduation from high school.

"We are committed to delivering financial literacy, and the partnership with Willamalane allows us to reach both students and their parents in a comfortable setting," said Tina DeHaven, manager of OCCU Springfield branches. "It's a bonus for us to be able to help Willamalane transport students to the center after school."

Applicants sought for three seats on Willamalane's Budget Committee

Willamalane Park and Recreation District is accepting applications to fill three open positions on its volunteer budget committee.

The 10-member committee—composed of district board members and an equal number of citizens—will study next year's proposed budget and make recommendations to the Willamalane Board of Directors about revenues and expenditures.

Applicants must live within the district's boundaries. The positions are for one one-year term, one two-year term, and one three-year term. Candidates will be interviewed by the board on Wednesday, Feb. 8. Appointments will be made that same evening. Weekly evening meetings are set to begin in mid-May and possibly through the end of the month.

Interested candidates can pick up an application during regular business hours at Willamalane Center for Sports and Recreation, 250 S. 32nd St. in Springfield, or download an application at <http://goo.gl/n9qQx>. The deadline to submit applications is 5 p.m. Friday, Jan. 27.

For more information, call Pam Caples, administrative services division director, at 541-736-4544, or visit willamalane.org.

Member News

Denise Bean appointed to vacant seat on Willamalane Board of Directors



Denise Bean was appointed to fill a vacant position on the five-member Willamalane Park and Recreation District board of directors. Bean has

served on the Willamalane Budget Committee, Friends of Willamalane Board, Springfield Renaissance Development Corporation Board and Springfield Planning Commission. She was president of the Springfield City Club. In addition, Bean served on the Springfield Chamber of Commerce Government Issues Committee, NEDCO Main Street Design Committee and is an active member with Springfield Rotary. She is owner of Bean Counter Tax Services in Springfield.

The board is composed of five lay members elected by the registered voters of the district to serve volunteer, staggered four-year terms. Each member represents the district at large rather than serving separate precincts. Willamalane policy allows the board to appoint a replacement through an application and interview process.

The functions of the board include reviewing and adopting the annual budget and determining policy for the district, among other duties. Regular board meetings are held at 6:30pm on the second Wednesday of each month at the Community Recreation Center.

Citizens Bancorp Announces Cash Dividend

On December 20th, 2011 the Board of Directors of Citizens Bancorp declared a cash dividend to be paid to all shareholders of record on January 5, 2012. The company declared a cash dividend equal to \$.35 per share of common stock, and \$.37 per share to holders of preferred stock. This dividend will be paid on or before January 13, 2012.

Bill Humphreys Sr., President/CEO of Citizens Bancorp and Citizens Bank stated, "We are pleased to continue our tradition of paying cash dividends, particularly during this period of economic recession. We are hopeful that the payment of a cash dividend will give some degree of financial assistance to our shareholders, who have been extraordinarily loyal and supportive. The bank continues to be safe, sound and profitable, and one of the few banks in the Northwest to pay a meaningful dividend in 2011".

To purchase stock or receive additional dividend information, contact Lisa Ladouceur, Administrative Assistant, Citizens Bancorp, 541-766-2261.

Citizens Bank, a wholly owned subsidiary of Citizens Bancorp, is a full service community Bank, (chartered in 1957), with offices in Corvallis, Albany, Philomath, Junction City, Springfield, Harrisburg, McMinnville, Dallas, Lebanon, Silverton, Oregon City, and Salem. Member FDIC.

Citizens Bank

Nicholas Filker, Marketing Officer
541-766-2253
www.citizensEbank.com

University of Oregon Announces 2011 Fall Term Degrees

A total of 757 students who have completed work toward 779 degrees submitted graduation applications during fall term 2011 at the University of Oregon.

DEGREE	COUNT DEGREES	COUNT APPLICANTS
Baccalaureate Degree	593	588
Certificate	17	17
Doctoral Degree	32	32
Masters Degree	118	114
First-Professional Degree	19	19
	TOTAL DEGREES	TOTAL APPLICANTS
	779	757

Information provided by:
UNIVERSITY OF OREGON NEWS, Office of Communications
<http://comm.uoregon.edu>

Member News

Community Contributes to Success of Eugene Symphony's COUNTERPOINT: WAR + PEACE

With the close of the Eugene Symphony's citywide initiative, Counterpoint: War+Peace (Nov. 4-Dec. 9), the symphony successfully brought symphonic music into the center of a public dialogue about war and peace, and highlighted the role of the arts in reflecting upon issues that impact us as individuals, communities, Americans and citizens of the world. The bold programming that Counterpoint offered also fulfilled the symphony's mission to expand its education and community engagement programs.



Counterpoint: War+Peace enjoyed active participation and broad support from the community. Preliminary attendance figures from

over 20 Counterpoint events, including three symphonic concerts, indicate that more than 8000 people participated in the initiative. More than a dozen partnering organizations—including the Jordan Schnitzer Museum of Art (JSMA), the University of Oregon, the Eugene Public Library, Lord Leebrick Theater Company, the Eugene Symphonic Band, Temple Beth Israel, Lane Community College, Vox Resonat, the Eugene Symphony Guild and many others—helped augment on-stage performances and foster community dialogue on the role of the arts on in our daily lives.

The world premiere of *In the Telling*, held at the Oregon Humanities Center on the UO Campus on Nov. 4, brought an important perspective to war, and allowed Eugene veterans to tell audience members about their experiences of war, and post-war life with their families and communities. A lecture, Benjamin Britten's War Requiem, given by Diane Retallack at the Eugene Public Library on Nov. 16, provided the historic context for the Requiem and an explanation of how Britten incorporated nine poems, written by Wilfred Owens during WWI, into his masterwork. The film, *Everything is a Present*, was shown at Temple Beth Israel on November 13 and documented the world's oldest surviving Holocaust survivor, pianist Alice Herz-Sommer. Following the film's deeply moving portrayal, a thoughtful discussion ensued regarding how music helped save the life of the Czech-born musician. At JSMA, comic journalist Joe Sacco's lecture drew an at-capacity crowd of 155 and had to be skyped into an overflow room. The museum's ongoing exhibit of Sacco's work, *Safe Area Gorazde: The War in Eastern Bosnia 1992-1995* was presented in partnership with Counterpoint: War+Peace.

Support for Eugene Symphony Counterpoint activities and concerts provided by Chambers Family Foundation, Oregon Neurosurgery Specialists, Wildish Companies, Meyer Memorial Trust, Oregon Cultural Trust, NeuroSpine Institute, Eugene-Irkutsk Sister City Committee, and Rezaee Dental Practice: Drs. Shahram and Laleh Rezaee.

FORTHCOMING CONCERTS—Thursday, February 25, 8 pm, Hult Center, Benjamin Britten's War Requiem, performed by Eugene Concert Choir in partnership with Counterpoint 2011.



The 59th Annual Christmas Parade 1st place winner is... Oregon Community Credit Union!

Oregon Community Credit Union employees gathered in Springfield, Saturday, Dec. 3, for the 59th Annual Springfield Christmas Parade, themed 'Through the Eyes of a Child.' The Annual Springfield Christmas Parade is a community event where local schools, organizations and businesses come together to celebrate the holidays. Springfield branches displayed their holiday



spirit in a Dr. Seuss inspired float for the parade, complete with Cindy Lou Who, The Grinch and The Cat in

The Hat, winning them first place in the vehicles category. Now that's nice!



Member News

Youth Fund— Providing Activities for Youth

American Legion Post 40 of Springfield wants to develop a Youth Fund to that will enable them to provide activities for the young people in our community. American Legion has programs that will teach leadership and give the opportunity to gain new perspectives in today's complex world of business and government. One such program is the 'American Legion Boys State'. This program is among the most respected and selective educational programs of government instructions for U.S. high school students. This week-long participatory program will have the students become part of the operation of local, county and state government. The cost of this program is a non-refundable registration fee of \$50.00 that is paid by the student and \$300.00 that is paid by the sponsoring American Legion Post. The Youth Fund they hope to develop will allow them to send more than one or two students per year to this particular program. American Legion also has other programs that they want to offer to our young people but this one is the most expensive.



American Legion Post 40

Wade Woolard
344 8th Street
Springfield, OR 97477
541-746-1752 • legion40@clear.net
www.legion.org/boysnation/
stateabout

Women's Club at Shadow Hills Country Club Donation Comes at a Critical Time for ShelterCare's Family Housing Program

ShelterCare received a \$3,395 contribution from the Women's Club at Shadow Hills Country Club on Dec. 22 to support its Family Housing Program. The grant, which is being given to the nonprofit as part of the Women's Club's yearlong fundraising efforts and is funded by proceeds from its annual Christmas Charity Fundraiser Party, will serve to provide counseling and short-term emergency housing for families.

The grant from the Women's Club arrives at a time when ShelterCare—an organization devoted to homeless families and adults with psychiatric disabilities and acquired brain injuries—is facing drastically reduced funding to support services and housing for homeless families. The Family Housing Program is funded through a combination of private philanthropy and public funds.

"The generosity and advocacy by these women on behalf of ShelterCare could not come at a better time in light of a great need," said ShelterCare Executive Director Susan Ban. "ShelterCare will use these funds to strengthen the services and financial support we are able to provide to families at risk of homelessness."

The Women's Club at Shadow Hills Country Club selected ShelterCare, along with another local organization, to be the recipient of its Christmas fundraising efforts. The Women's Club selects charities and programs that demonstrate the most need.

"During this deep recession, there are hundreds of thousands of families across the country who are losing their homes due to job losses, medical expenses, foreclosures, or other unfortunate circumstances," said Lou Panni, Women's Club at Shadow Hills Country Club representative. "We want to help our local community in some small way by selecting ShelterCare because of its emphasis on supporting homeless families and those at risk of becoming homeless."

The grant will help ShelterCare offer safe, stable short-term housing and counseling. ShelterCare's Family Housing Program assists families in addressing the causes of their homelessness and aids in the transition from temporary to permanent housing.



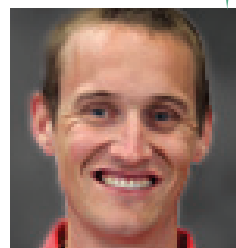
Member News

Kendall Auto Group Helps Make the Holidays Brighter for Local Kids.

Kendall Auto Group donated over \$35,000 to *Christmas for Kids*, a holiday tradition started 17 years ago by one of their great employees. This year, over 400 local children each received \$100 worth of goodies, half for clothing essentials and half for toys on their wish lists. These were handed out at a Santa Brunch where the children took photos with Santa and the families enjoyed a hot breakfast. Recipients of these holiday gifts were referred by First Place Family Development Center, Relief Nursery, Womenspace, schools and other local agencies. Founder Amy Newport said, "It was a success for sure. I always have a hard time deciding which part I like the most, the smiles we bring to the kids or watching so many people come together to make a difference. I was so proud of the Kendall family this weekend. We had staff from every store helping with all three days."

Kendall Lexus also sponsored Relief Nursery's *Great Taste*. Kendall Subaru sponsored *Sounds of the Season*, giving children's groups the opportunity to showcase their talents at Valley River Center.

Also, congratulations and thank you to Dennis Thomas for your 25 years of dedicated service to Kendall. You will be greatly missed, but we know you will enjoy the extra time with your family during your retirement!



Summit Networking and Referral Group Inducts New Officers

President will be Bob Clarke, owner of Creative Advertising Services, Vice President will be Dylan Scott, Airgas Nor Pac, Treasurer will be Eric Powell with Doster & Riihimaki CPA's and Secretary will be Jeanine Wallace with Concordia Group.

Summit Networking & Referral Group is a business referral organization that provides a positive, supportive, structured environment for the development and exchange of quality business referrals. There is only one business professional per category in the group. "In 2011 our members closed over \$650,000 from the referrals given to one another. In a down economy we are helping each other's business grow", explains President Bob Clarke. Being a member of Summit Networking creates a dynamic sales and marketing team that otherwise wouldn't be open to a business owner. Members keep their ears and eyes open for potential business contacts that might benefit other members. Meetings are held weekly and provide a positive environment for the exchange of quality business referrals.

"My membership fees have been paid for several times over by the quality referrals I've received since I joined," says Secretary Jeanine Wallace. "I could never have made all these contacts by myself. Because I meet weekly with business professionals, I've taken the time to get to know, like and trust them. Now that I know them so well, I'm willing to do business with them and refer them to my contacts. I want to see their business grow, and they help me in return by helping my business grow."

For more information on Summit Networking & Referral Group visit their website at www.summitnetworking.org

Summit meeting are held each Tuesday at 11:30am at the Mookie's Northwest Grill located at 400 International Way in Springfield. Visitors from non-competing businesses are welcome and encouraged to bring plenty of business cards to exchange. You may contact Summit Networking & Referral group by email at info@summitnetworking.org.

SUMMIT Networking & Referral Group

Weekly Meetings at Mookies Northwest Grill:
Tuesday 11:30 AM, 400 International Way, Springfield, Or.

The Peak of Excellence in Referral Networking

www.Summitnetworking.org | Info@Summitnetworking.org

Member News

Biomass tax credits stabilized wood prices, fueled economic benefits

Study of 2010 focused on the wood-fuels market, examining both collectors and wood-to-energy providers

The first full year of Oregon's tax credits given to biomass collectors and producers, as administered by the Oregon Department of Energy, helped stabilize prices for wood-based fuel, supported as many as 73 jobs and created economic benefits that exceeded the program's cost, researchers report.

The biomass tax-credit program in 2010, as applied to forest biomass, created "an average of about five jobs, nearly \$250,000 in wages and benefits, and over \$850,000 in total economic activity per 10,000 BDT [bone dry ton]," concluded the five-member research team. The overall wood-fuels market, according to the report, "likely supported about 300 jobs, more than \$14 million in wages and benefits, and more than \$50 million in economic activity in Oregon."

The findings were published in a working paper titled "Impacts of the Biomass Producer or Collector Tax Credit on Oregon's wood fuels market and economy." The Ecosystem Workforce Program of the University of Oregon's Institute for a Sustainable Environment prepared the report for the state Department of Energy.

The focus of the report was aimed specifically at one segment of the wood-fuels market—forest biomass, made up of logging debris, known as slash, and small-diameter materials generated from thinning and other forest-health projects.

Because of the state's economic conditions, including a downturn in lumber produced by mills as housing starts dropped off, "the tax credit helped this market stay competitive at a time when it likely would have not been able to do so," said lead author Max Nielsen-

Pincus, a faculty research associate in the Ecosystem Workforce Program.

Researchers examined data related to those who operate certified wood-to-energy facilities and those who collected, transported and delivered the materials to the facilities. The credit was created in 2007 by the Oregon Legislature and was originally administered by the Oregon Department of Revenue. Collectors of forest biomass could get \$10 for each BDT of forest biomass they delivered to a bioenergy facility. About 85 percent of the \$6.6 million of tax credits had been awarded to forest-biomass collectors.

These collectors hauled biomass materials an average of 103 miles to facilities that, in turn, paid from \$30 to \$45 per BDT, with the higher payments coming from facilities in Washington and northwest Oregon.

Economic activity generated from the forest biomass tax-credit incentive likely ranged from 1.0 to 2.4 times the cost in foregone tax revenues. This is based on a statistical model used to generate scenarios to predict wood fuel prices and capture uncertainties related to forest biomass entering in marketplace. The most-conservative model generated results that concluded the economic impact to the state matched dollar for dollar what it cost the state in forgone tax revenue.

"We hope to continue this study to determine the results of the tax credit in 2011," said study co-author Matt Krumenauer, a senior policy analyst at the Oregon Department of Energy, which funded the research.



In 2010, the USDA Biomass Crop Assistance Program and the American Recovery and Reinvestment Act allowed the Forest Service, Bureau of Land Management and private landowners to subsidize the transfer of biomass off some lands. The federal programs were mostly phased out in 2011.

"We hope that this report will contribute to policy conversations about how to best foster renewable energy development and value-added wood products in Oregon," said Cassandra Moseley, co-author and director of the Ecosystem Workforce Program at the UO.

"Between the state and federal programs, it looks like we're creating an economic lever that's causing more material to get out of the forests and into the renewable energy sector," Nielsen-Pincus said at a meeting in Portland, Ore., where the results were first unveiled. "In all cases you create some jobs and economic activity, more than the program costs, mostly by turning logging slash into an energy source."

A fourth co-author on the working paper was Katherine MacFarland, a former EWP research assistant who now is a presidential management fellow focusing on biomass policy with the USDA Forest Service.

The working paper is available at the Ecosystem Workforce Program website, <http://ewp.uoregon.edu>.

photos and audio segment: <http://bit.ly/t6BB5s>